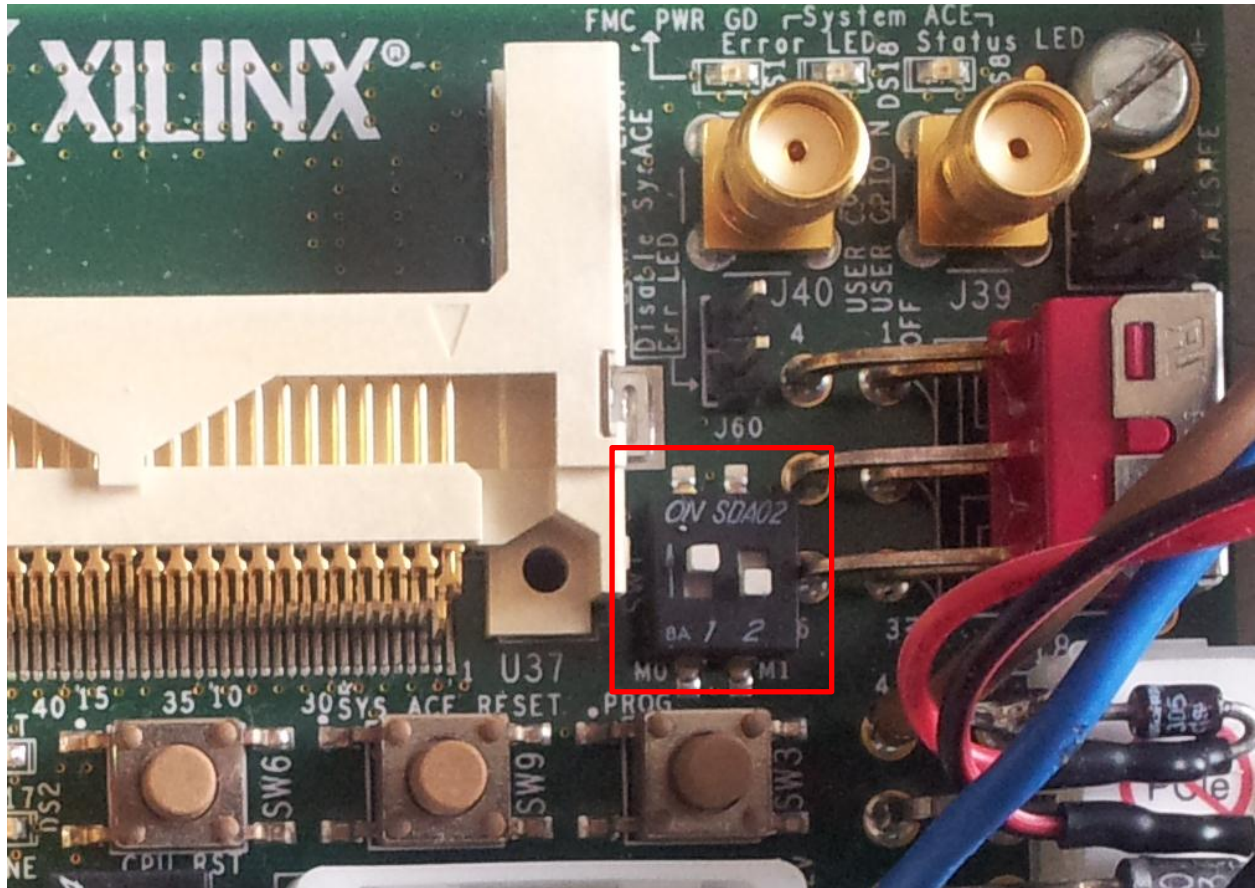


Configure SP605 to boot from SPI Flash

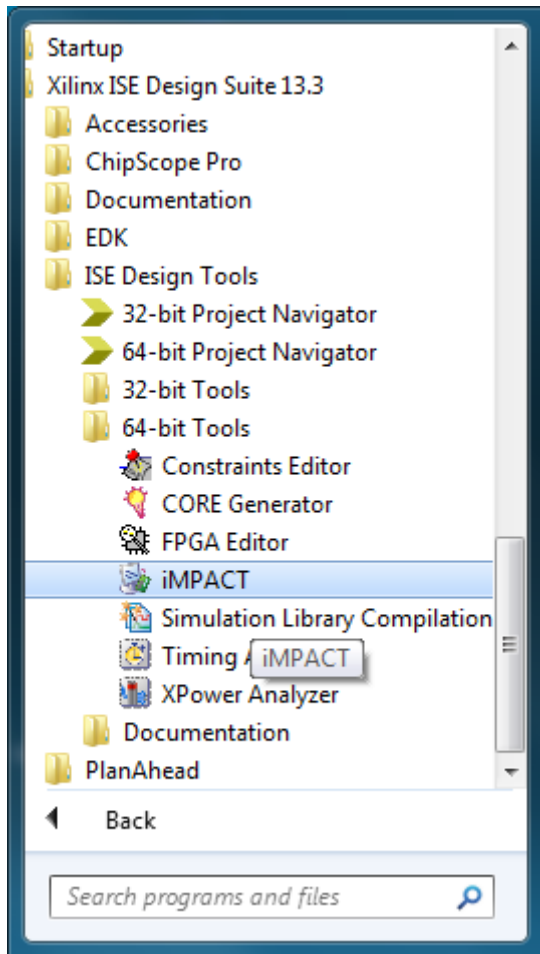
Warning: contrary to what the manual states, for our board the mode switch SW1 must be set to 10 (see red box below):



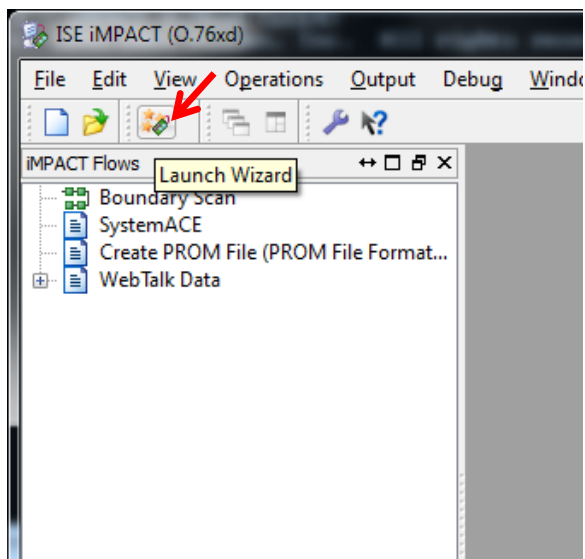
Also observe other jumper settings referring to the manual.

Connect a USB cable to PC and to the “JTAG” port of SP605. Switch SP605 on.

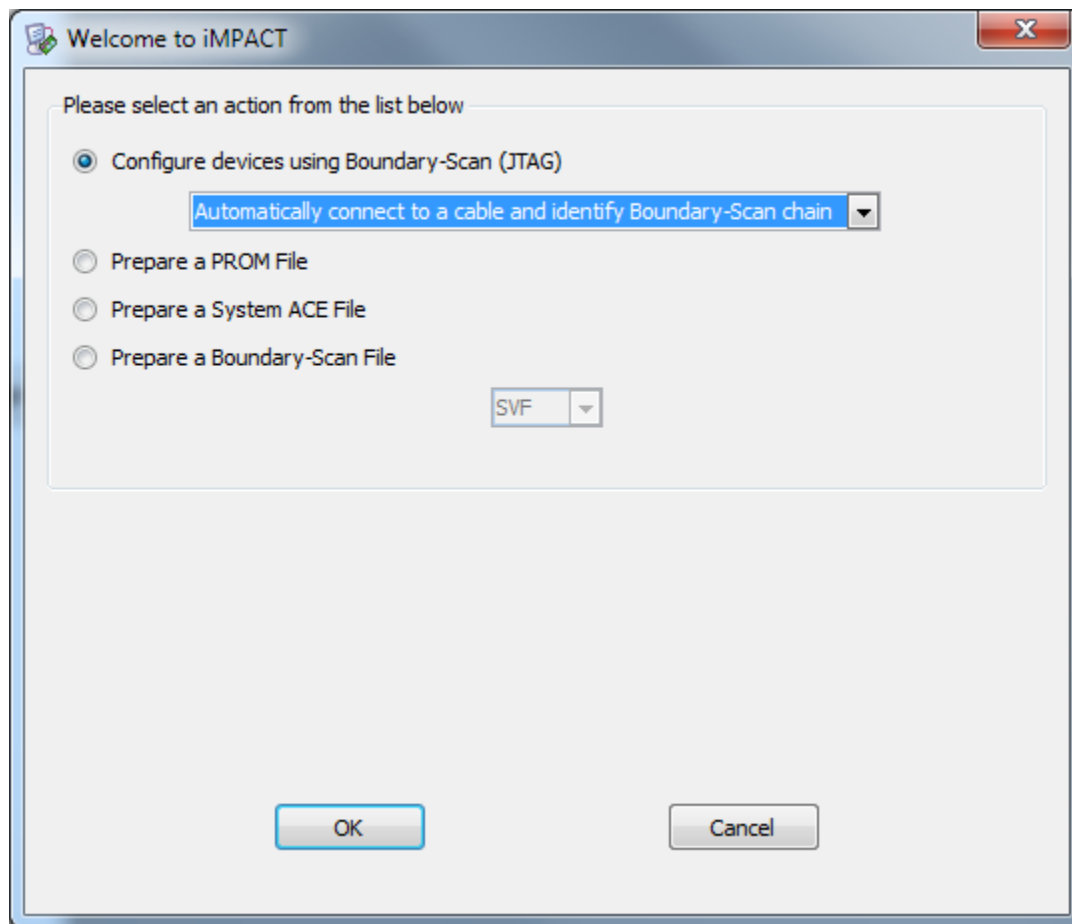
Install Xilinx ISE Design Suite (free WebPACK edition is sufficient), including programming cable drivers.
Start iMPACT



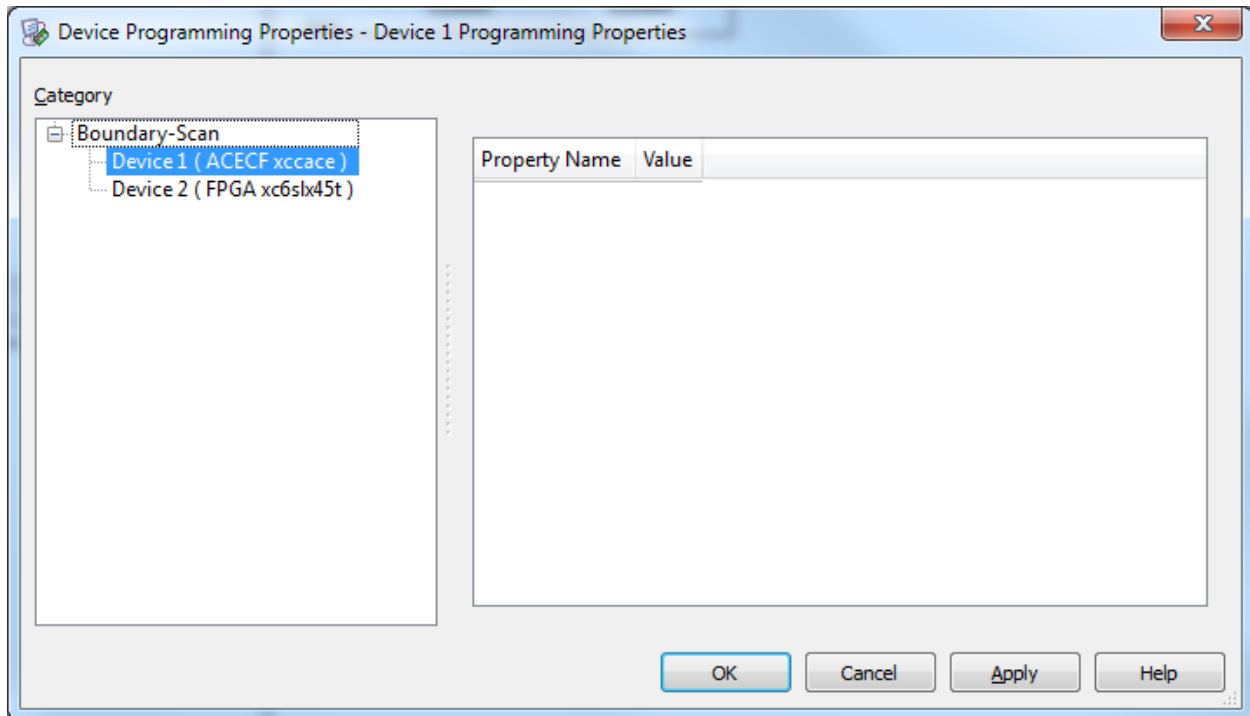
Select “Launch Wizard”



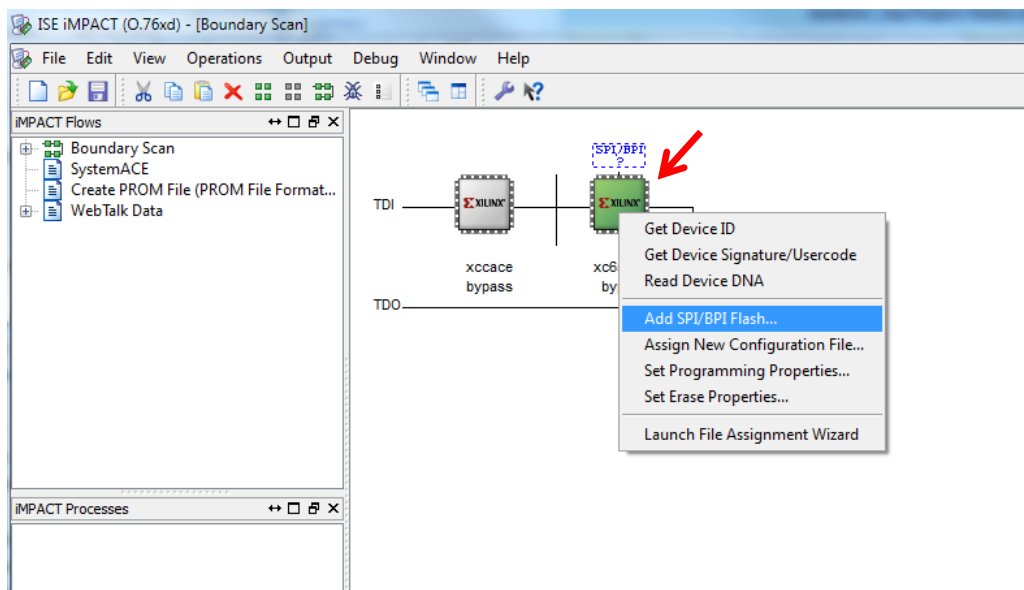
Select "Configure devices using Boundary-Scan (JTAG)", click OK



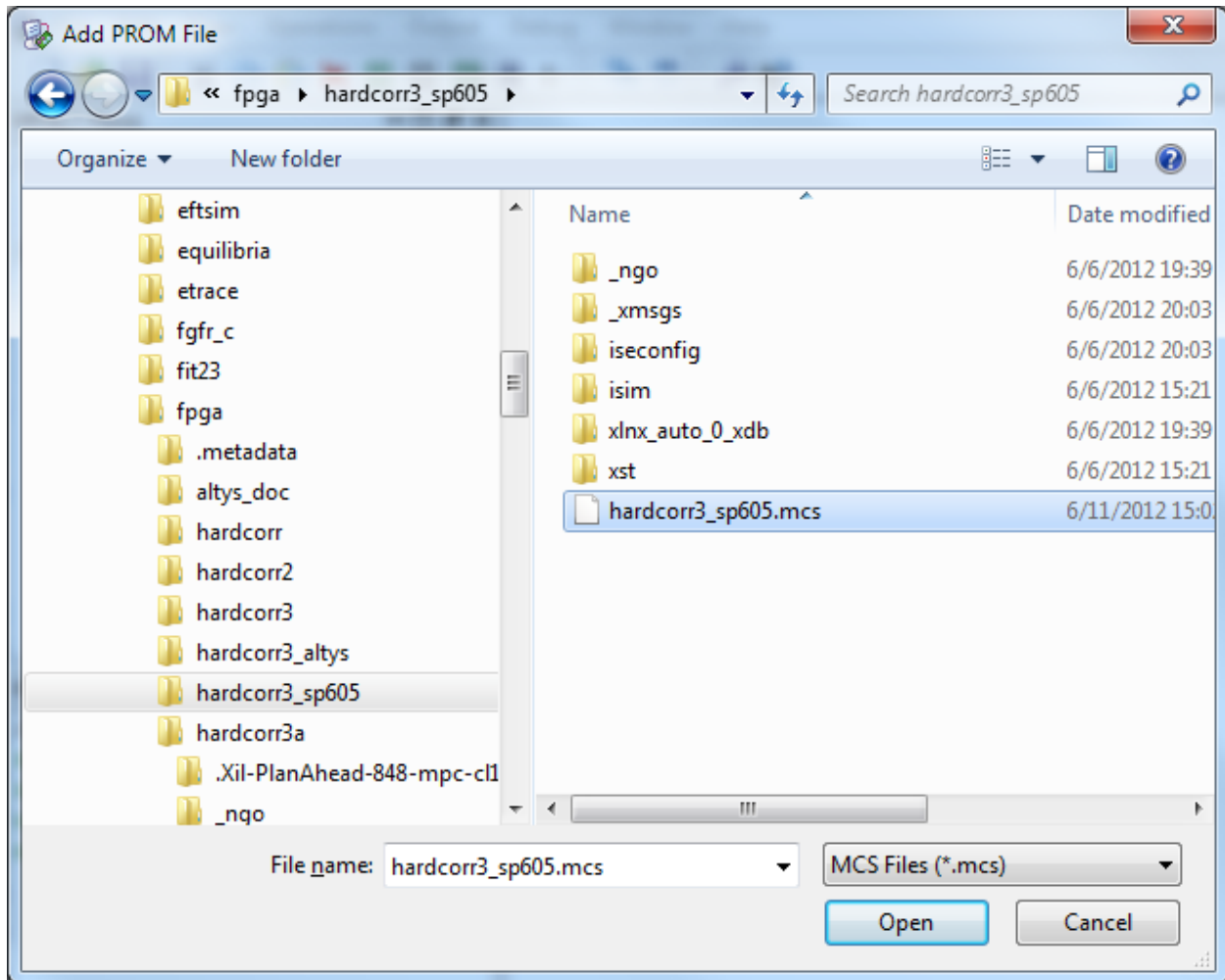
Here click Cancel until the next window appears



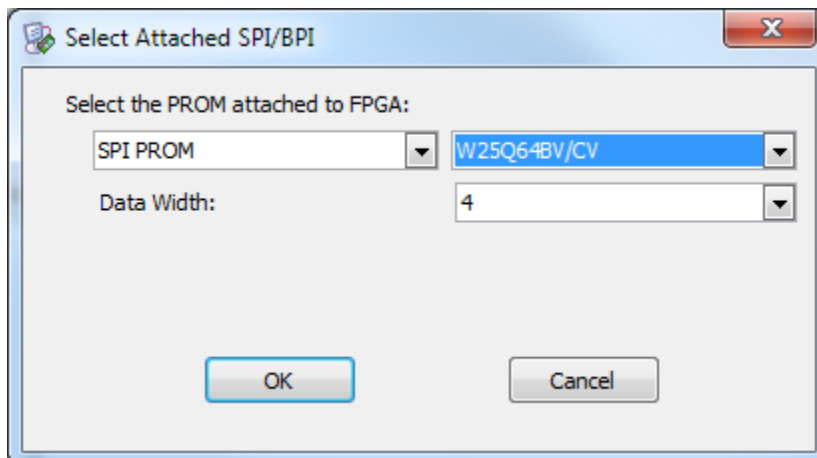
Right-click on the FPGA icon and select "Add SPI/BPI Flash..."



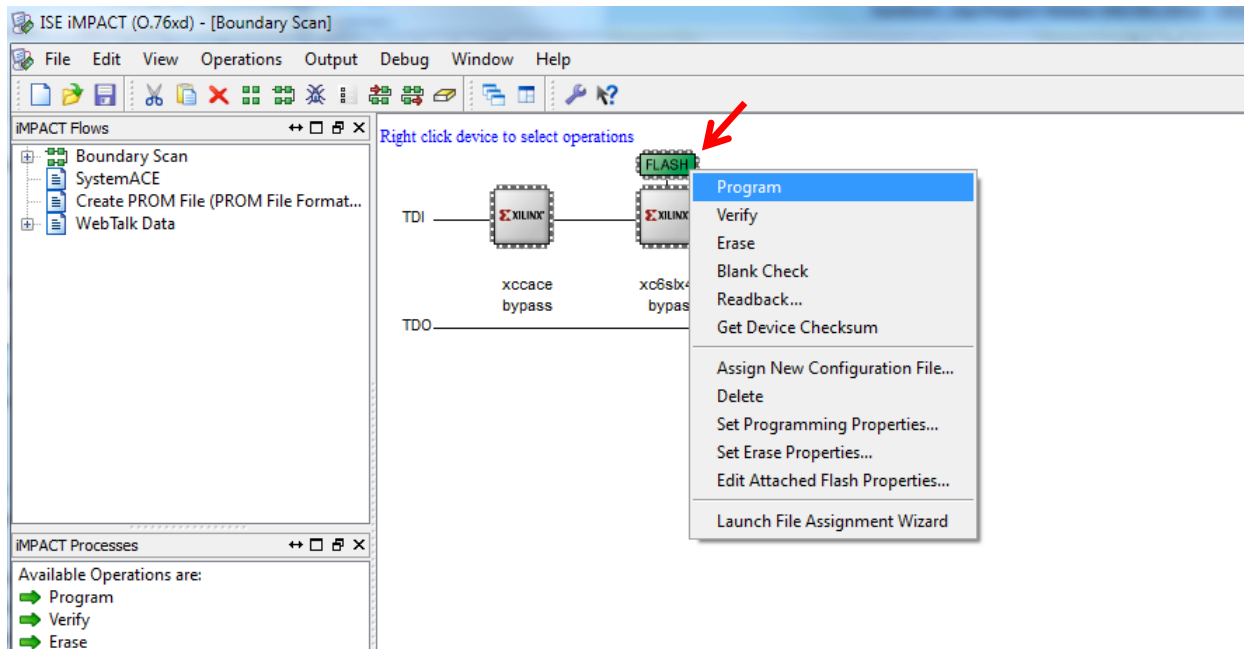
Select the firmware file



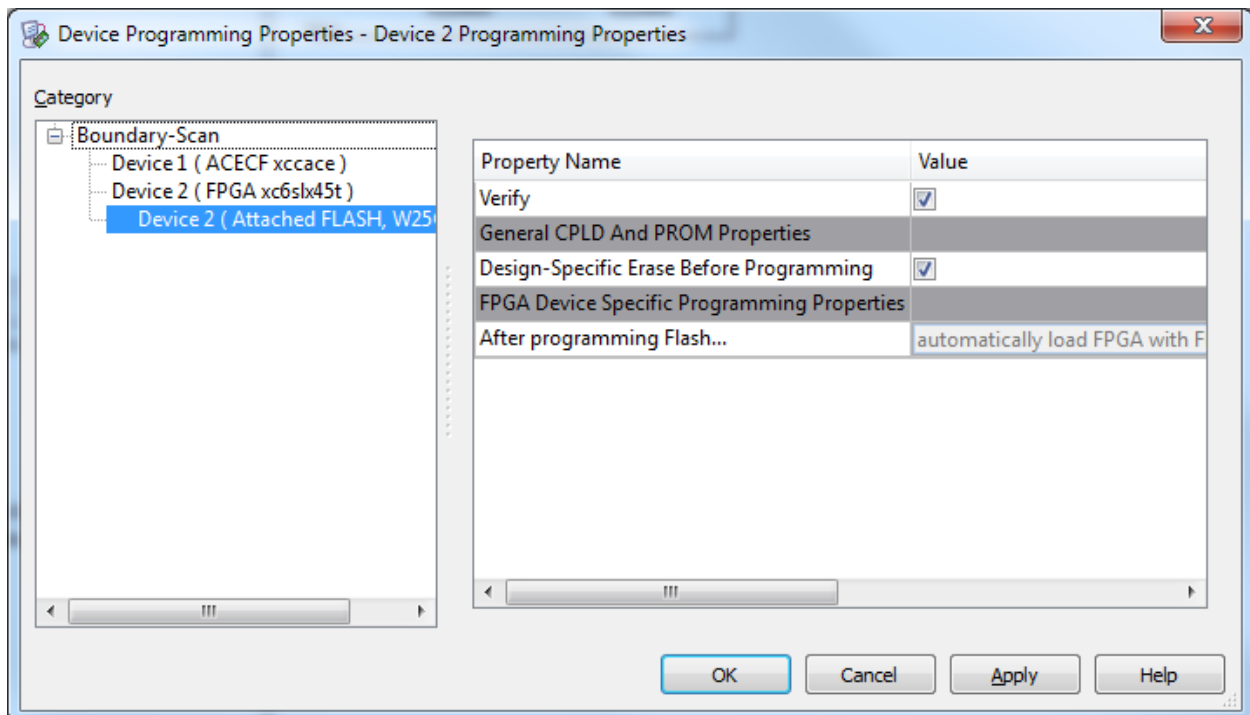
Set flash properties as shown below



Right-click on the flash icon and choose “Program”



Click OK



Ready! Switch SP605 off; connect the USB cable to the “UART” port.

The PC (GUI) software requires:

- .NET 4.0 runtime. For older Windows versions it is available from Microsoft Download Center (search for “Microsoft .NET Framework 4 Client Profile”).
- Virtual COM port drivers: download the latest version from silabs.com (search for “CP210x VCP Drivers”)

Switch SP605 on, start the GUI program `hardcorr_gui.exe`. Select the right port (usually COM3).