

Installation notes

System requirements

OS Name **Microsoft Windows 7 Enterprise**
System Type **x64-based PC**
Processor **Intel(R) Core(TM) i7 CPU 860 @ 2.80GHz, 2800 Mhz, 4 Core(s), 8 Logical Processor(s)**
Installed Physical Memory (RAM) **16.00 GB (at least 8.00 GB is needed)**

Download options

In order to cover different requirements from users, we suggest few optional software packages for download:

[Seidel Software 2014.zip \(617 MB \) \(includes all trial software\)](#)

[Seidel Software MFD\(Basic\) 2014.zip \(54 MB \)](#)

- Paris_LV2011_x64
- Margarita (project) LV2011 x64SF
- Kristine_GLOBAL LV2011 x64_sf

[Seidel Software MFD\(Extended\) 2014.zip \(76 MB \)](#)

- Paris_LV2011_x64
- Margarita (project) LV2011 x64SF
- Kristine_GLOBAL LV2011 x64_sf
- FitMachine LV2011_x64_sf
- View_MCS2_x64 LV2011
- Jordi is my girlfriend_LV2011 x64_sf
- Get mean count rate from SPC files_LV2011x64

[Seidel Software MFIS 2014.zip \(79 MB \)](#)

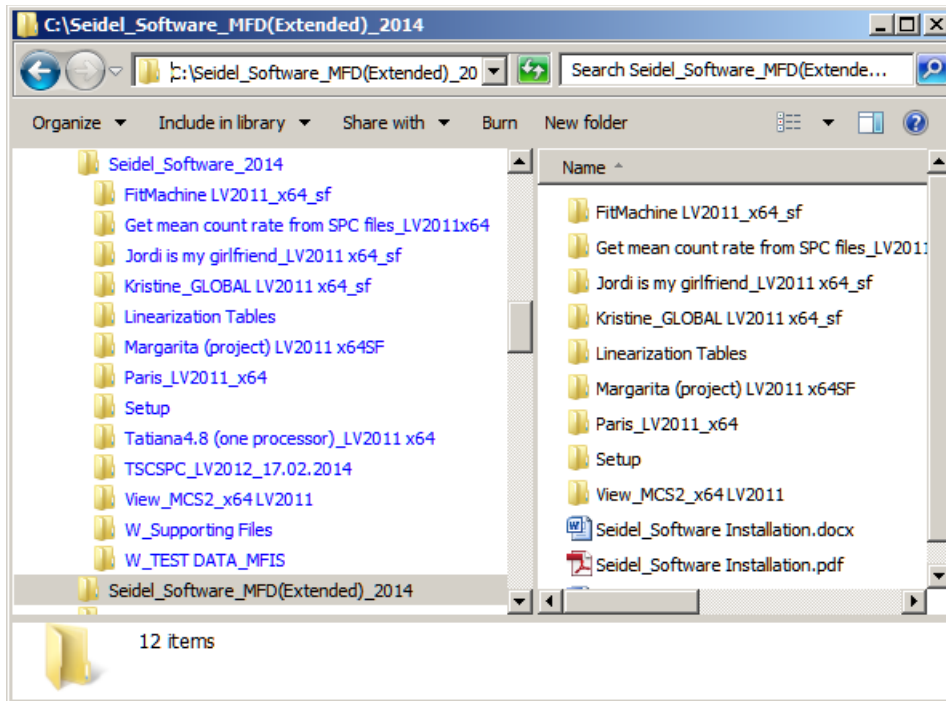
- TSCSPC_LV2012_17.02.2014
- Margarita (project) LV2011 x64SF
- Kristine_GLOBAL LV2011 x64_sf

[Seidel Software PDA 2014.zip \(24 MB \)](#)

- Tatiana4.8 (one processor)_LV2011 x64

Seidel_Software_2014 (or reduced other package)

The downloaded *.zip files of the software should be directly extracted on to C:\ drive (important for proper functionality!!!): if you have software in the subfolder with the same name of *.zip file then move this folder directly on C:\ drive (see below).



Or copy “*Seidel_Software_2014 folder*” (or reduced other package) from DVD directly to C:\ drive.

LV runtime Engines

- For programs (in LV2011) LabView RunTime Engine for LV2011_x64 should be installed by running setup file:

C:\W_Supporting_Files\LabView Runtime Engines\for LV2011_x64\ LVRTE2011SP1f2_x64std.exe

- For *Ani-3SF* LabView RunTime Engine for LV2012 x64 should be installed by running setup file:

C:\W_Supporting Files\LabView Runtime Engines\for LV2012_x64\ LVRTE2012SP1_f5Patch-64std.exe

- The following files should be installed additionally for “*Ani-3SF*” software if you get error message about missing *.vi’s or *.dll’s by program start:

C:\W_Supporting Files\vc redistrib_x64_V2005_SP1\ vc redistrib_x64_V2005_SP1.EXE

and

C:\W_Supporting Files\dotNetFx40_Full_x86_x64\ dotNetFx40_Full_x86_x64.exe

IMPORTANT!!!

US regional settings (decimal symbol - dot, digit grouping symbol - comma) are required to be set up on the computer.

